

---

# YOLKEY

Christopher Kopiwoda, Eliana  
Kinzler, Kiara Chance, Sadie Latragna



---

# BACKGROUND

---

---

# SCENARIO

Elderly people often have problems with mobility, frailty, and hand coordination; while also being isolated and having less independence. This can lead to them not being able to perform everyday tasks such as turning a key.

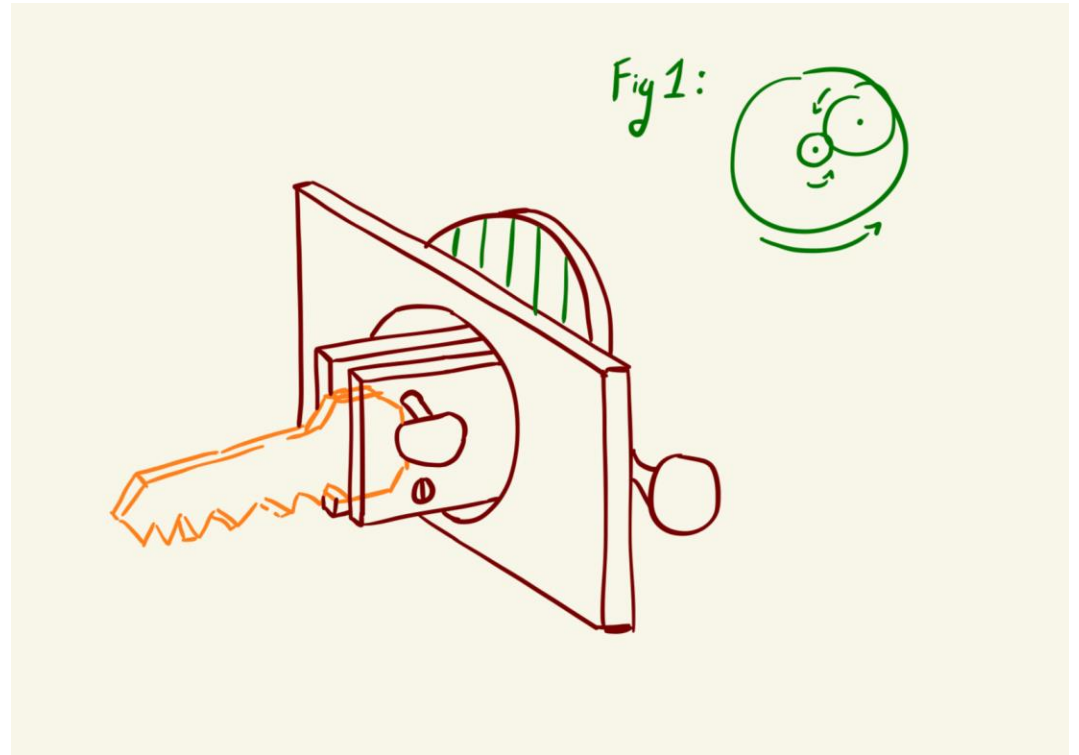
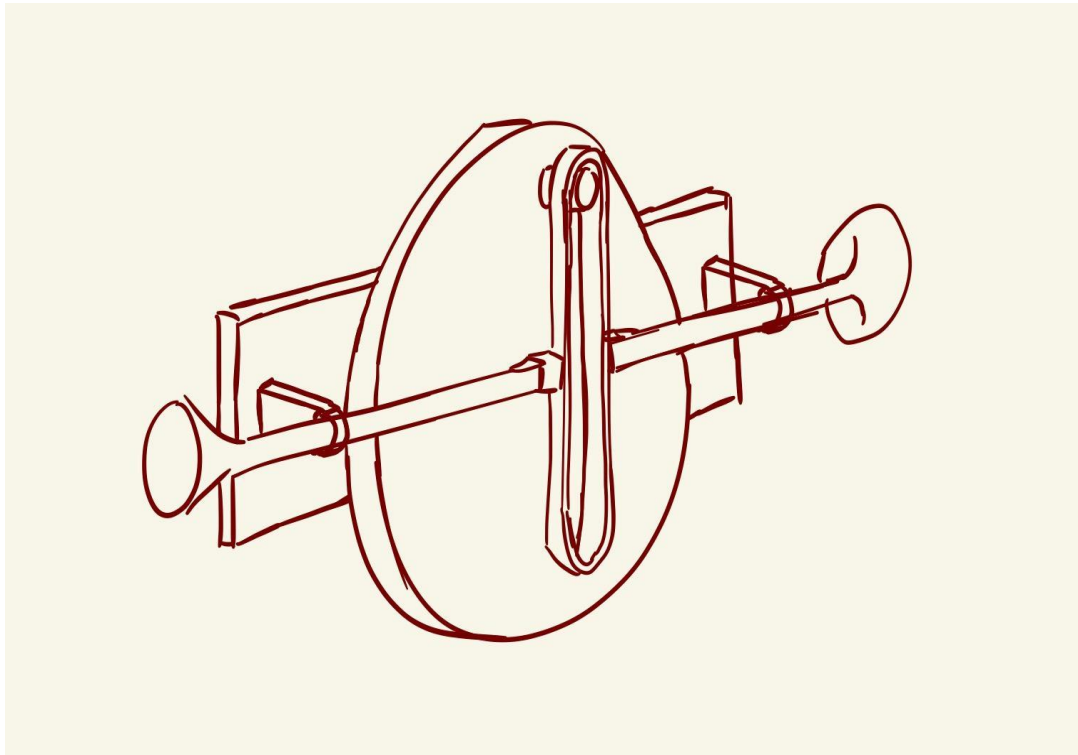
This does not only affect the elderly but also anyone and everyone. As coordination and loss of mobility can happen to anyone at any age. Such as people with carpal tunnel, muscle dystrophy, along with other conditions.

---

---

# STATISTICS

- Hand function seems to remain stable until age 65 years, after which it gradually reduces. (Physiopedia contributors)
  - There is a significant reduction in both action potentials and in the number of viable motor units associated with the hand muscles in the elderly. (Physiopedia contributors)
  - Three of the main thumb muscles play important roles in stabilizing the thumb during strong pinch grips of objects and these commonly show age-related dysfunction.  
(Physiopedia contributors)
-

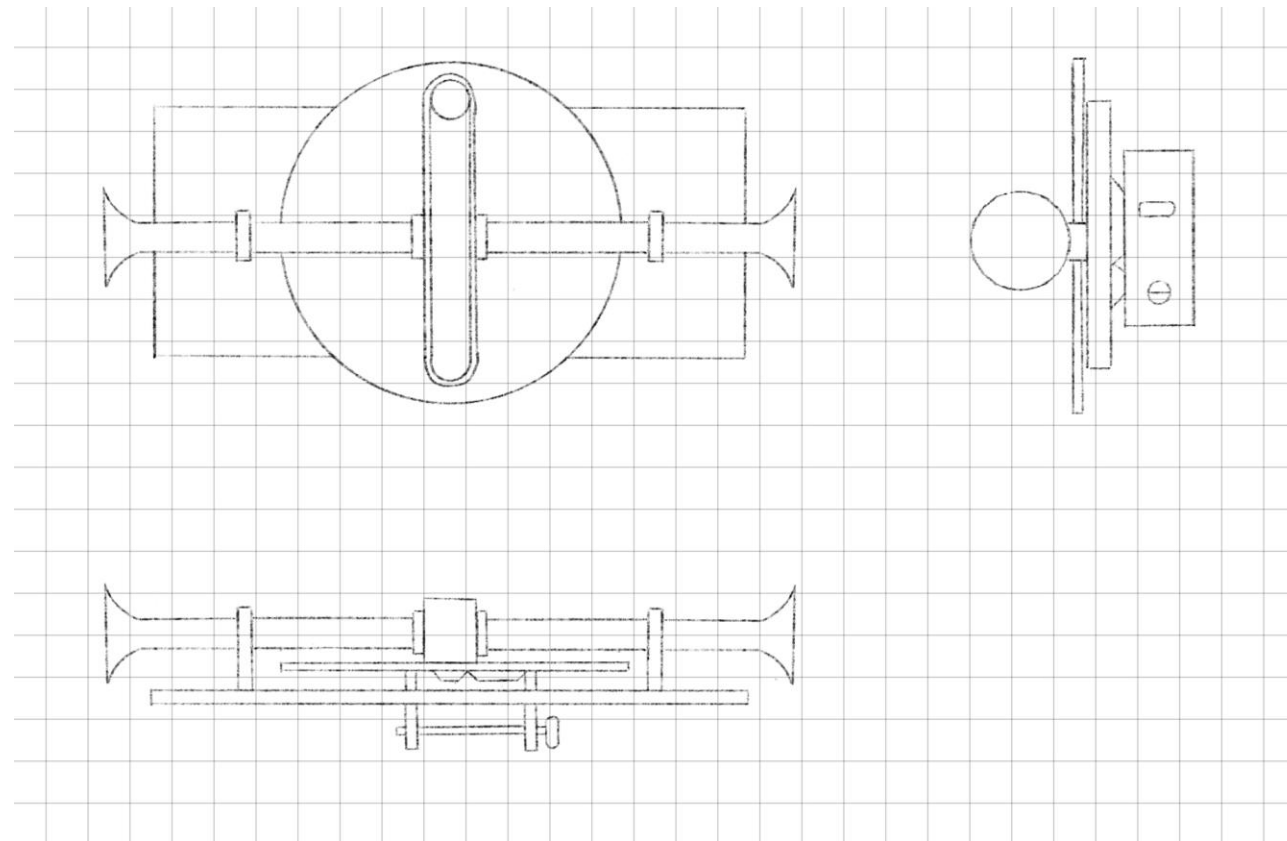


---

**SKETCH**

---

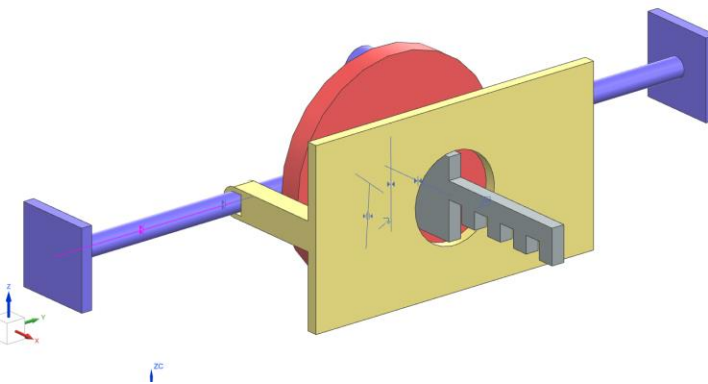
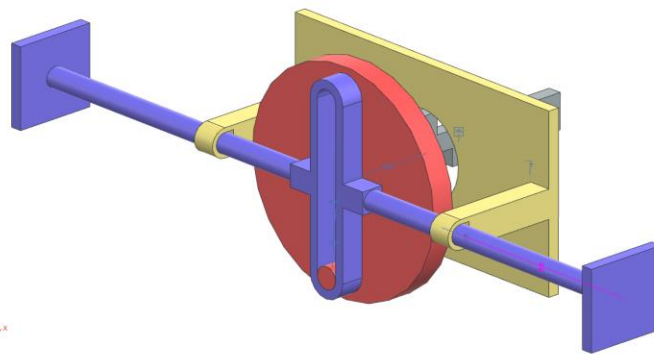
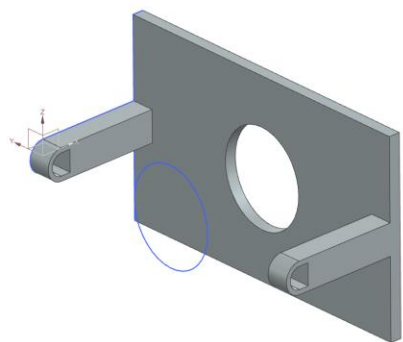
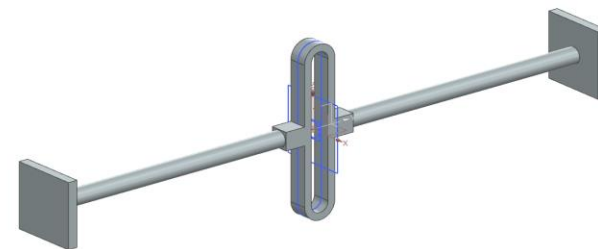
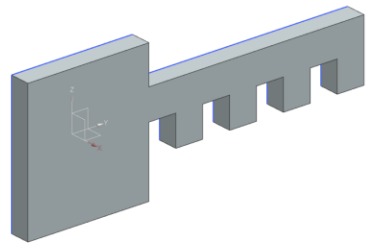
# TECHNICAL PRODUCT DESIGN

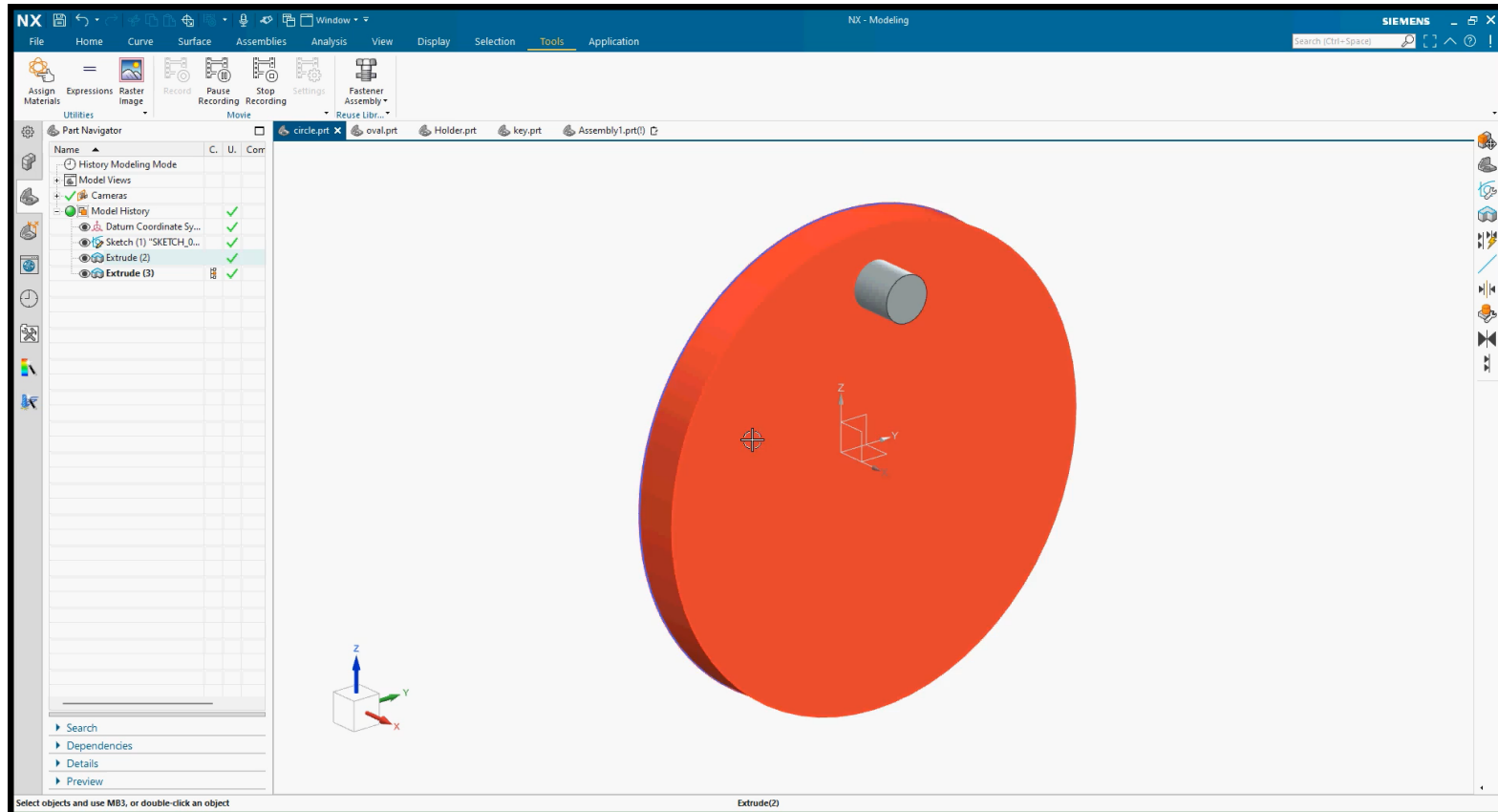


---

# 3D MODEL

Figures: Key, Wheel, Bar, Holder, Assembly 1, Assembly 2





VIDEO  
DEMONSTRATION

---

# ADVERTISEMENT

**Yolkey**

Lock and unlock your door effortlessly.

Easy as eggs.



---

# WORK CITED

- Works Cited

- Physiopedia contributors. "Effects of Ageing on Hand Function." *Physiopedia*, Physiopedia, 1 Jan. 2025, [www.physio-pedia.com/Effects\\_of\\_Ageing\\_on\\_Hand\\_Function](http://www.physio-pedia.com/Effects_of_Ageing_on_Hand_Function). Accessed 22 Mar. 2025.
- Eissen, Koos, and Roselien Steur. *Sketching: The Basics*. BIS Publishers, 2020.

